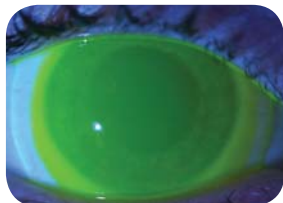
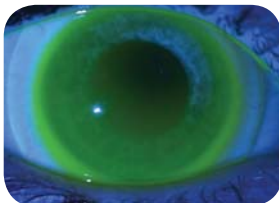


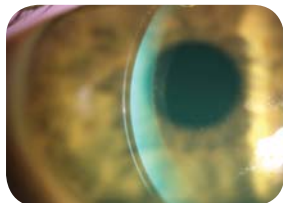
**Central Vault Zone (CVZ)**



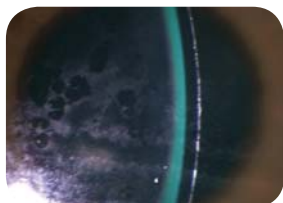
**Adequate Central Clearance**



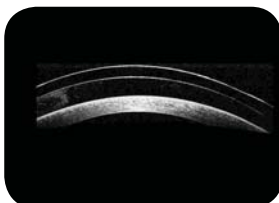
**Inadequate Superior Central Clearance**  
(trial fit higher SAG)



**Excessive Central Vault**  
(approx 800 microns, trial fit lower SAG)

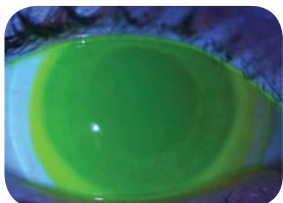


**Minimal Central Clearance**  
(approx 200-250 microns, raise PCZ +4)

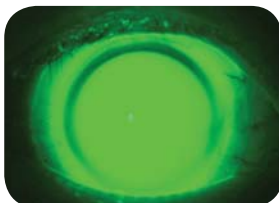


**Excessive Central Vault**  
(approx 500 microns, lower PCZ -4)

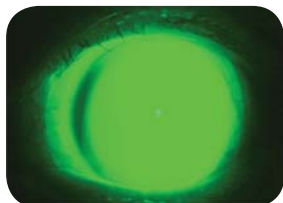
**Peripheral Corneal Zone (PCZ)**



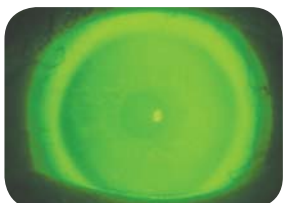
**360° Appropriate Peripheral Corneal Clearance**



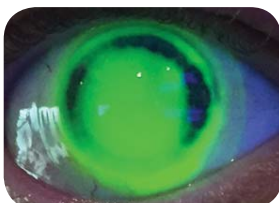
**360° Inadequate Peripheral Corneal Clearance** (raise PCZ +5)



**Inadequate Peripheral Corneal Clearance at 9 o'clock** (raise PCZ +5)

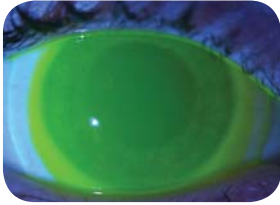


**Thin Peripheral Fluorescein at 9 o'clock**  
(raise PCZ +3)

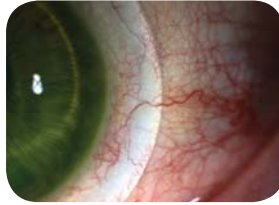


**Heavy Peripheral Corneal Touch**  
(raise PCZ +10)

## Limbal Lift Zone (LLZ)



**Good Fluorescein Coverage Over Limbus**  
(more inferior due to inferior decentration)



**Minimal Limbal Clearance**  
(raise LLZ +5)

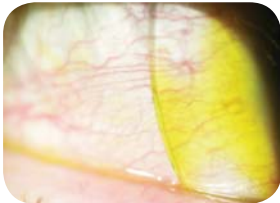
## Sclearal Landing Zone (SLZ)



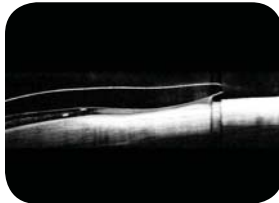
**Appropriate Scleral Landing**



**Mild Blanching**  
(lift SLZ -1.00)

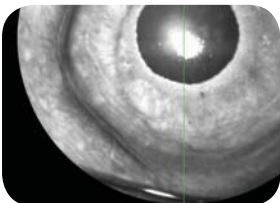


**Scleral Lift Off**  
with fluorescein washing out (decrease SLZ +3.00)

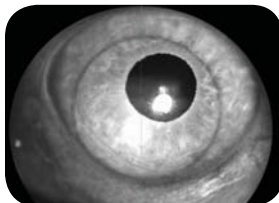


**Excessive Scleral Lift Off**  
(decrease SLZ +3.00)

## Miscellaneous



**Conjunctival Prolapse**



**Excessive Decentration**