

Call in the Expert.

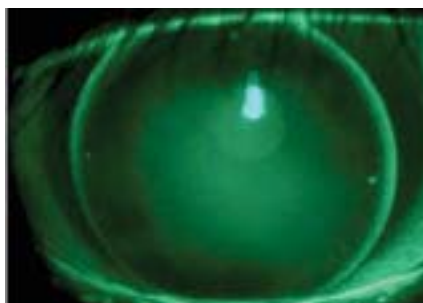


A clinical study by Brooke Messer, OD, Tom Quinn, OD, Stephanie Woo, OD, Sara Bierwerth, OD, Miki Sakata, OD, and Satoshi Mizutani, OD

A performance evaluation summary of the Expert Progressive was conducted across six clinical sites with Drs. Brooke Messer (Minneapolis, MN, USA), Tom Quinn (Athens, OH, USA), Stephanie Woo (Lake Havasu, AZ, USA), Sara Bierwerth (Sartell, MN, USA), Miki Sakata (Tokyo, Japan) and Satoshi Mizutani (Tokyo, Japan). Patients recruited were established gas permeable lens wearers in both eyes, and were determined presbyopic by reported symptoms and subjective refraction.

With the increased use of computers and hand-held digital devices at home and in the workplace, the need for clear vision at all distances is in high demand, and presbyopes are no exception. The Expert Progressive by Precilens is a gas permeable, progressive multifocal, optically designed like a progressive spectacle lens. Because of its unique power design, there are specific distance, intermediate and near zones in the lens, but without the harsh junctions of other segmented multifocal designs.

Available from



“Crisp vision at all distances is possible with the Expert Progressive, a true gas permeable progressive multifocal.”

In the multi-site performance evaluation, 84% of patients agreed that the Expert Progressive provides all-around better vision than their current modality, and elected to continue wearing the new design. Many patients, almost 90%, were able to achieve 20/25 vision or better and distance in each eye, and the average near acuity with both eyes for all patients was 20/25, or J1.

**Ordering: 800.253.9364
Consultation: 800.566.8001
www.artoptical.com**

The key to the superior vision provided by the Expert Progressive is the spherical distance and near zones, with a true progressive addition intermediate zone. Patients can use the intermediate zone much like their spectacle lenses, by tilting their head up and down to achieve the desired vision based on working distance. The spherical near zone is utilized but the lens' unique translation design, which is a patented reverse curve, rather than a flat truncation. This reverse curve keeps the lens round 360 degrees, significantly improving the comfort and wearing experience compared to other translating lens designs. The lens is also available with toric correction options to improve fit or vision for patients with moderate to high astigmatism. Speak with a consultant to learn more about even more ways to customize the Expert Progressive.

While the lens design may sound complicated, the fitting and ordering process is not. Empirical ordering is available to minimize chair time, and the zones are customizable based on your patient's refraction, add power, pupil size and eyelid positioning. If a re-order is needed, the segment heights of both the intermediate and near zones are independently adjustable based on the patient's lifestyle demands.

ALSO, JOIN THE *EXPERT PROGRESSIVE KOL* COMMUNITY ON OUR FACEBOOK PAGE, OR CHECKOUT WWW.EXPERTPROGRESSIVE.COM FOR TRAINING VIDEOS, FITTING TIPS AND ORDERING FORMS.