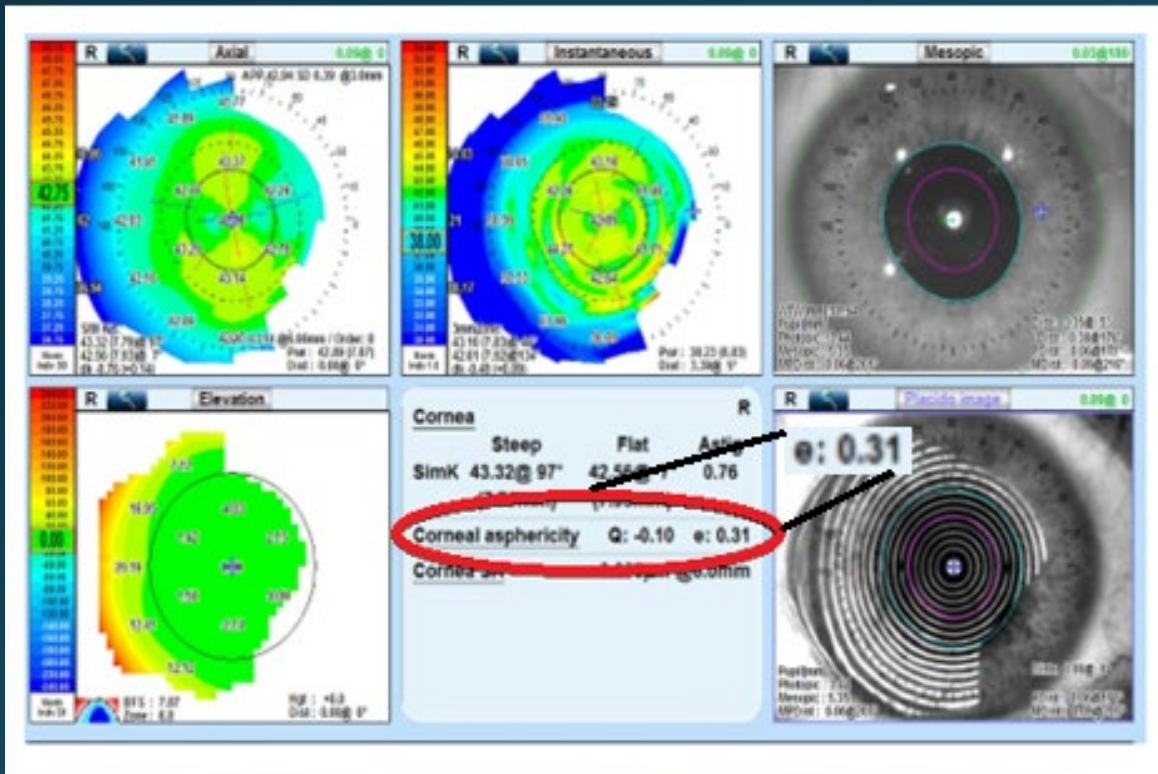
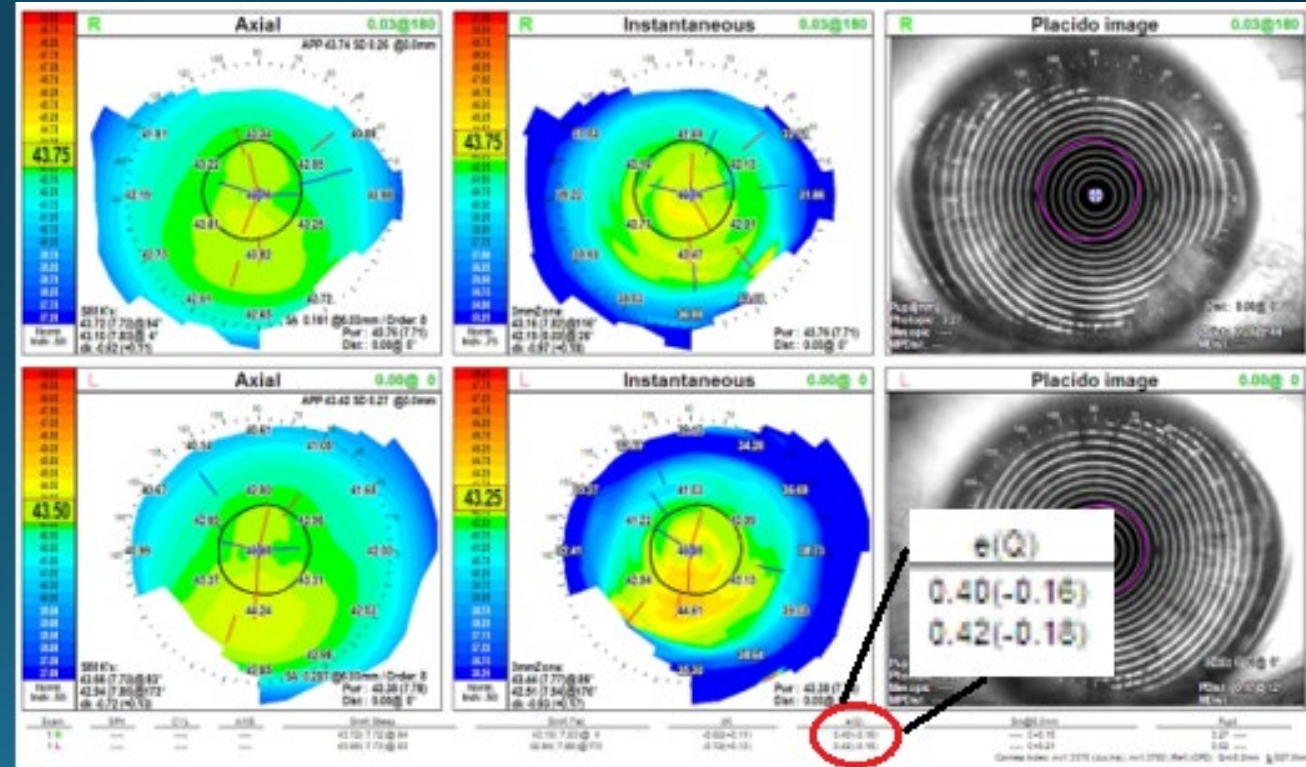


Nidek Settings for MOONLENS

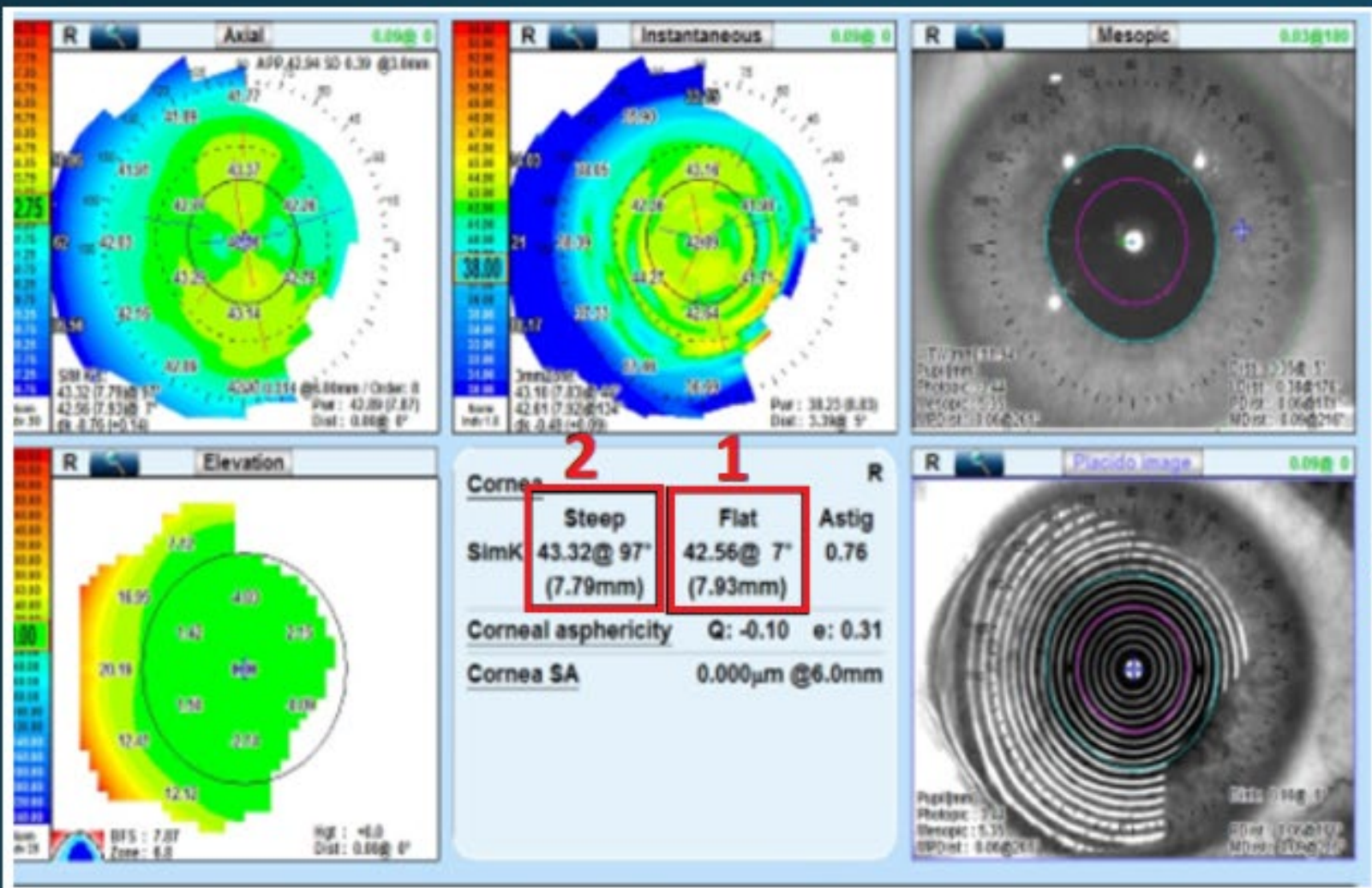
It is recommended to select “Use K-readings without Eccentricity” on the MOONLENS calculator when fitting from the Nidek topographer. The e-values provided on Nidek topographies are mean calculations between flat and steep meridians. These are not appropriate for MOONLENS parameter calculations.



Do not use mean eccentricity



Do not use mean eccentricity



MOONLENS Flex Calculator

	OD	OS
Patient Rx	<input type="text"/>	<input type="text"/>
Diameter	10.6	10.6
OZ	<input type="text"/>	<input type="text"/>
1 Flat Ro / Flat K	<input type="text"/>	<input type="text"/>
Flat Eccentricity	<input type="text"/>	<input type="text"/>
2 Steep Ro / Steep K	<input type="text"/>	<input type="text"/>
Steep Eccentricity	<input type="text"/>	<input type="text"/>

3 Use K-readings without Eccentricity