

# Presenting GP Presbyopic Contact Lens Options

## Frequently Asked Questions

Share the following points when answering patient questions

### Can I wear bifocal contact lenses?

- "Yes! There are contact lenses in both GP and soft materials that can help you see both up close and far away."
- Offer to set up an appointment for a contact lens evaluation to see if the patient is a good candidate.

### Do bifocal contact lenses work?

- "Absolutely! There have been many advancements in recent years and bifocal contact lenses are very successful for many patients. I would be happy to help you set up a contact lens evaluation to see if you are a good candidate."

### Are soft or GP bifocal contact lenses better?

- "Many patients can wear both types of contact lenses. GP bifocals provide clearer, crisper vision. This is because they are firmer and can move easily into a reading position to help you with near vision. GP materials are also very healthy because they allow more oxygen to reach your eye. They are also very easy to handle."

### Is it difficult to get used to bifocal contact lenses?

- "Getting used to bifocal contact lenses is like getting used to bifocal or progressive eyeglass lenses. If you are wearing contact lenses for the first time, you may be aware of the lenses for a few days, but that will go away. We'll teach you how to apply, remove and care for the lenses and make sure you are comfortable before you try it on your own."

### How much are bifocal contact lenses?

- "The fees vary depending on your prescription and the type of contact lens that fits you best. You will need to be seen by our eye care professional in order for us to give you an exact fee since the contact lenses are designed to fit your eye and your individual vision needs."

### Patient Friendly Terminology

GP lenses or gas permeable lenses *instead of* hard, rigid or RGP lenses

Lens awareness *instead of* hurt or pain

Bifocal or multifocal contact lenses *instead of* segmented, alternating, translating, aspheric or simultaneous vision lenses

Apply and remove *instead of* insert and remove or I&R

Diagnostic lenses, diagnostic fitting or fitting evaluation *instead of* trial lenses or trial fitting

Refer to lens and fitting fees *instead of* cost or price

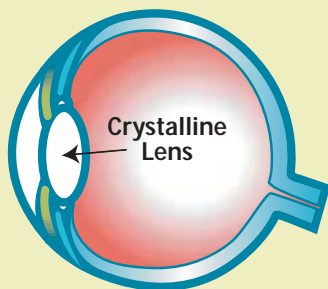


For more information visit [www.gpli.info](http://www.gpli.info)

# Correcting Presbyopia

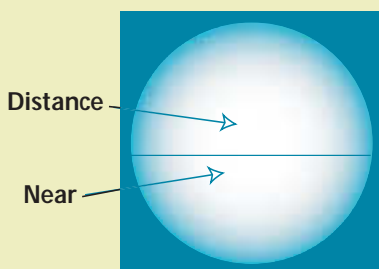
## What is presbyopia?

As the *crystalline lens* of the eye continues to grow throughout life, it becomes denser and loses its ability to change shape and focus on objects at different distances. This loss of focusing ability starts to become evident when people reach their 40's. This is called *presbyopia*. It is not a disease and it happens to everyone.



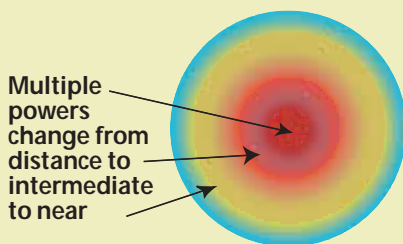
## What contact lens options are available?

**Bifocal** contact lenses have two separate areas available for vision. Typically, the top area is used to provide clear distance vision and the lower lens area is used to provide clear near vision. These lenses are similar to bifocal eyeglass lenses. This type of lens is also referred to as an alternating or segmented design. (Trifocal contact lenses are also available.)



Bifocal

**Multifocal** contact lenses have many different prescription zones to help deliver up close, arm's length and distance vision. These lenses create a multiple range of vision similar to progressive spectacle lenses. They are also referred to as aspheric or simultaneous vision lenses.



Multifocal

## GP Bifocal and Multifocal Lenses Offer:

- 1) Maximum vision available in contact lenses
- 2) Healthy contact lens wear because more oxygen reaches the eye
- 3) Easy lens care
- 4) Long lens life
- 5) Lower long term contact lens costs

The lenses will meet most of the wearer's visual needs most of the time. There may be times when vision in eyeglasses serves the patient better, but in general the contact lenses will give them the visual freedom they desire.

For more information visit [www.contactlenses.org](http://www.contactlenses.org)